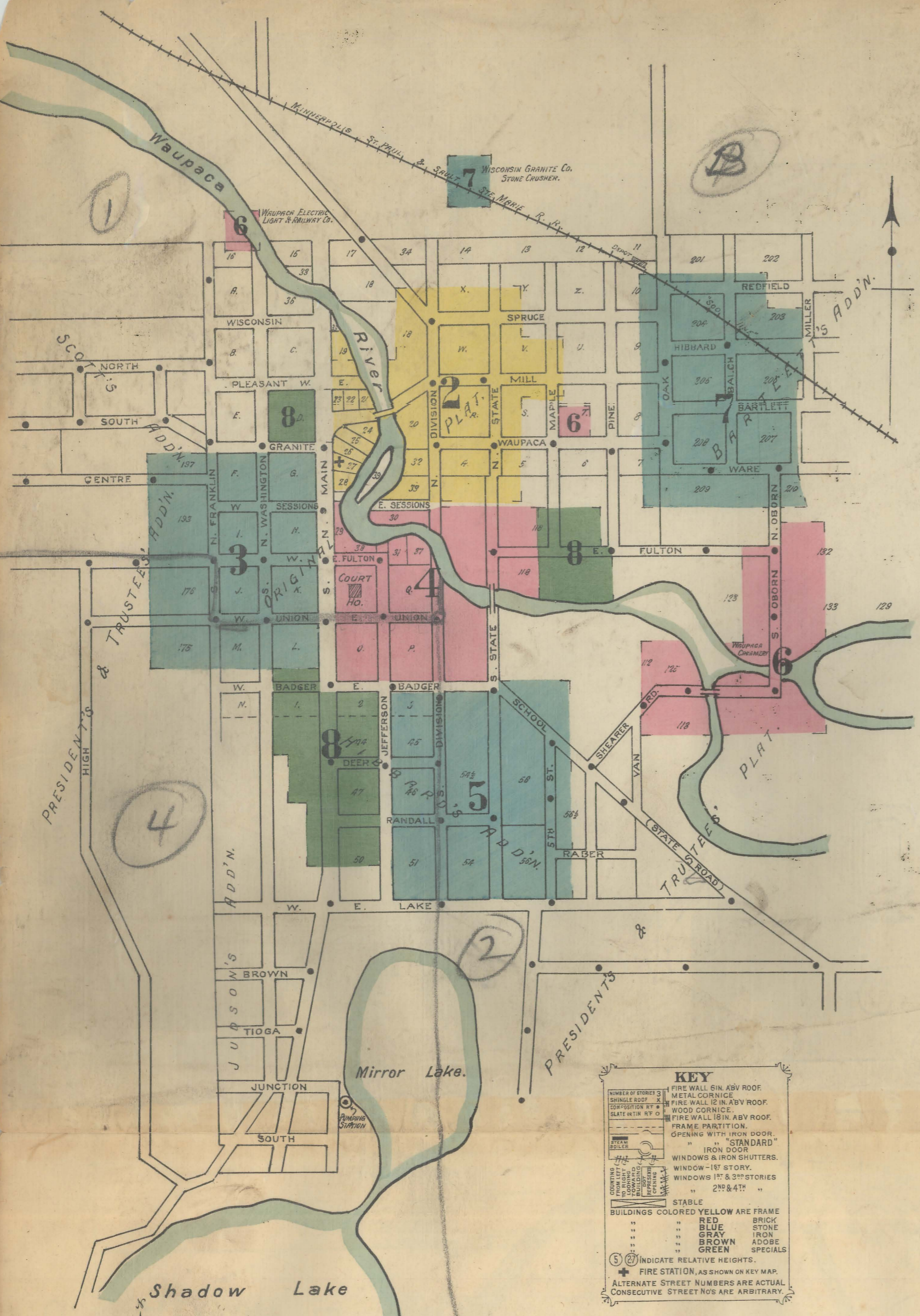




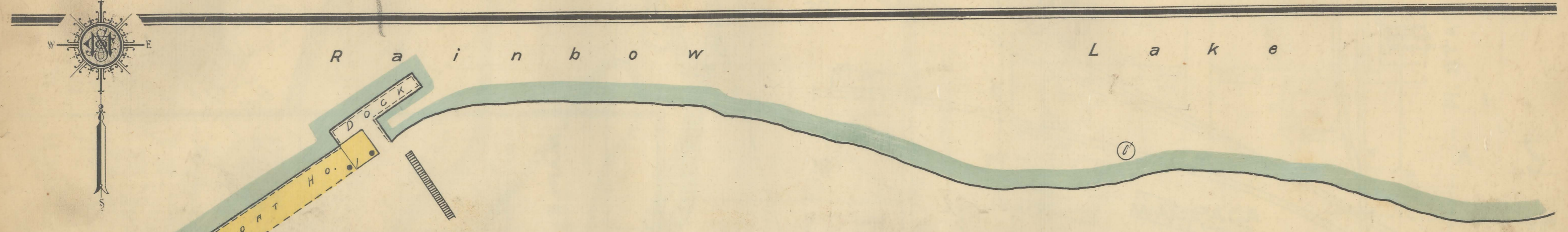
WATER FACILITIES: Municipal ownership. Gravity or direct pressure. 20,000 gal. Reservoir located 3/4 mile N. of Court House. Two pumping stations, No. 1, 2 Smith Lake. Power pumps 100,000 gallons each over 24 hours. Water from Waupaca River. Station No. 2, 1 Byron Jackson centrifugal pump, capacity 1,000,000 gals. per 24 hours, operated by electricity & draws water from 20 wells. Domestic pressure 55 lbs. Fire pressure as required. 77 Double hydrants 8 miles of 4" to 12" mains. Average daily consumption 20,000 gallons.



KEY
FIRE WALL SIGN, ANY ROOF
METAL CORNICE
NUMBER OF STORIES
...
BUILDINGS COLORED YELLOW ARE FRAME
RED BRICK
BLUE STONE
GRAY IRON
BROWN ADDBE
GREEN SPECIALS
S (with circled S) INDICATE RELATIVE HEIGHTS.
+ FIRE STATION, AS SHOWN ON KEY MAP.
ALTERNATE STREET NUMBERS ARE ACTUAL
CONSECUTIVE STREET NOS ARE ARBITRARY.

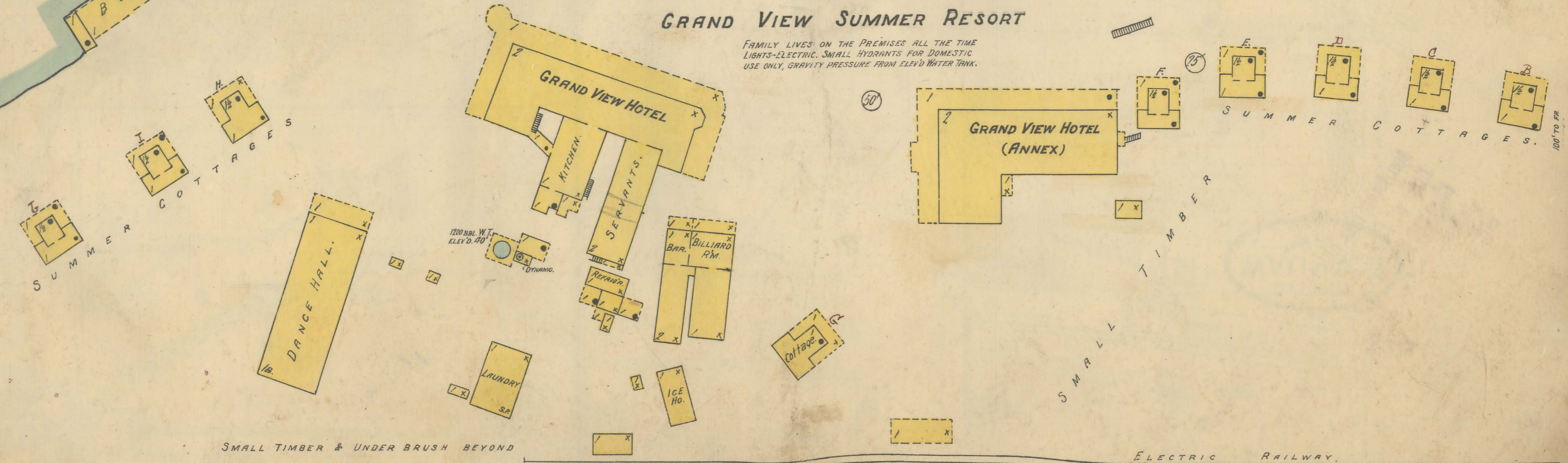
INDEX.

STREETS.		SPECIALS.	
Badger, E.,	100-118 *8	Baptist Church,	5
Oborn, N.,	101-315 *4	Central House,	7
" W.,	200-312 *5	Lumber Co.,	6
Balch,	100-119 8	City Mills,	9
Bartlett,	200-508 7	Water Works Station No. 1,	2
Bell Ave.,	700-817 7	County Court House and Jail,	4
		Crystal Springs Bottling Works,	6
Centre,	300-323 3		
Churchill,	100-117 6	Marden Ave.,	9
Clark Ave.,	200-319 5	Mill,	9
Cumberland Ave.,	700-810 *7	Dane Baptist Church,	7
		" Methodist Episcopal Church,	2
Deer,	100-117 8	Danish Evang'l Luth'n Holy Ghost Church,	6
Division, N.,	100-119 4		
" S.,	200-505 2		
" S.,	100-225 4		
" S.,	300-523 5		
Elm,	100-117 8		
Fifth,	400-511 5		
Franklin, N.,	100-221 3		
" S.,	100-215 3		
Fulton, E.,	100-411 4		
" S. S.,	412-516 8		
" W.,	near Oborn 6		
" W.,	100-319 3		
Granite,	100-118 *8		
" S.,	101-219 *8		
Hibbard,	700-815 7		
Jefferson,	100-225 4		
" S.,	300-520 *8		
" S.,	301-523 *5		
Lake,	201-505 *5		
Main, N.,	100-122 *4		
" S.,	101-221 *3		
" S.,	200-414 *2		
" S.,	301-401 *8		
" S.,	100-214 *3		
" S.,	101-225 *4		
" S.,	216-224 *8		
" S.,	300-521 8		
Manchester Ave.,	100-119 8		
Maple,	200-208 *6		
" S.,	near Mill 9		
Miller,	300-421 2		
Milwaukee Ave.,	608-615 7		
" S.,	301-407 *7		
" W.,	100-118 7		
" S.,	100-106 *6		
" S.,	114-121 7		
" S.,	100-225 6		
Pleasant, E.,	100-119 2		
" W.,	100-119 8		
Raber,	100-117 5		
Randall,	100-117 5		
Redfield,	700-810 *7		
Sawyer Ave., see Cumberland Ave.,			
School,	400-513 5		
Sessions, E.,	100-216 *4		
" S.,	101-215 *3		
" W.,	100-219 3		
Shearer Road,	700-761 6		
State, N.,	100-117 4		
" S.,	118-219 2		
" S.,	100-225 4		
" S.,	300-423 5		
Union, E.,	100-215 4		
" W.,	100-323 3		
Van,	401-409 *6		
Ware,	700-821 7		
Washington, N.,	100-219 3		
" S.,	300-402 *8		
" S.,	100-212 3		
Water,	213-314 *8		
Waupaca,	100-225 2		
" S.,	501-513 *6		
" S.,	606-613 7		
Wisconsin Ave.,	100-225 4		
Wright Ave.,	100-225 4		
Episcopal Church,	E		8
Fire Department,	F		2
First Methodist Episcopal Church,	F		8
Grand View Summer Resort,	G		1
Granite Hotel,	G		8
Hansen, A. M., Machine Shop, &c.,	H		4
Saw and Planing Mill,	H		8
High School,	H		5
Hotel Florence,	H		4
Fulton,	H		3
Kiser & Derleth Creamery Co.,	K		6
M. St. P. & S. St. M. R. R. Depot,	M		7
Nelson, A. G., Lumber Co.,	N		2
Olson, P. M., Potato Warehouse,	O		2
Opera House,	O		8
Our Saviour's Danish Luth'n Church,	O		5
Pabst Brewing Co., Beer Depot,	P		7
Park Hotel,	P		4
Penney, A. M., Co., Potato Warehos.,	P		2 & 7
Post Office,	P		3
Public School,	P		5
Rasmussen, J., Potato Warehouse,	R		7
Riverside House,	R		2
Rosche, F. W., Foundry,	R		4
St. Mary's Catholic Church,	S		5
Schlitz, J., Brewing Co., Beer Depot,	S		7
Soo Line Freight Depot,	S		7
Standard Oil Co.,	S		7
Starks, L., Co., Potato Warehouse,	S		7
Union Starch Co., Potato Warehouse,	U		2
Starch Factory,	U		8
Waupaca Elec. Light & R'y Co., Elec. Plt.,	W		6
Car Barn,	W		7
Felting Mills,	W		6
Flour Mill and Elevator,	W		6
Starch & Potato Co., Starch Fac.,	W		6
Warehouse,	W		6
W. G. B. R. R. Depot,	W		2
Wisconsin Granite Co.,	W		7
State Veteran's Home,	W		9
Y. M. C. A. Building,	Y		4

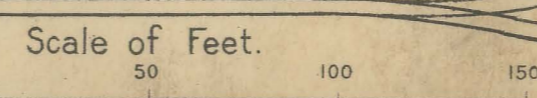


GRAND VIEW SUMMER RESORT

FAMILY LIVES ON THE PREMISES ALL THE TIME
LIGHTS-ELECTRIC. SMALL HYDRANTS FOR DOMESTIC
USE ONLY. GRAVITY PRESSURE FROM ELEV'D WATER TANK.



SMALL TIMBER & UNDER BRUSH BEYOND



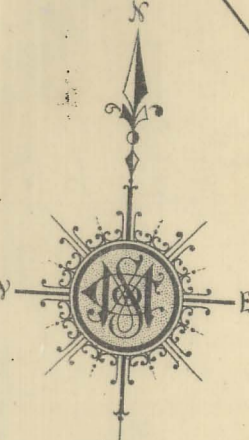
ELECTRIC RAILWAY.

Located 4 Miles S.W. of Waupaca & 1/2 Mile from Wisconsin State Veteran's Home.

OCT. 1909
WAUPACA
WIS.



ELM



MILL

Pond

WATER

Waupaca River

MILL

WAUPACA

8 E. PLEASANT

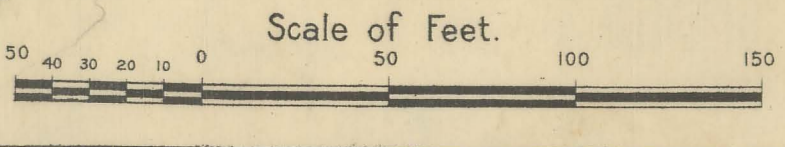
3 N. MAIN

N. DIVISION

N. STATE

E. SESSIONS

4



30
31
32
33
34
35
36
37
38
39
40
41
42
43
44
45
46
47
48
49
50
51
52
53
54
55
56
57
58
59
60
61
62
63
64
65
66
67
68
69
70
71
72
73
74
75
76
77
78
79
80
81
82
83
84
85
86
87
88
89
90
91
92
93
94
95
96
97
98
99
100
101
102
103
104
105
106
107
108
109
110
111
112
113
114
115
116
117
118
119
120
121
122
123
124
125
126
127
128
129
130
131
132
133
134
135
136
137
138
139
140
141
142
143
144
145
146
147
148
149
150
151
152
153
154
155
156
157
158
159
160
161
162
163
164
165
166
167
168
169
170
171
172
173
174
175
176
177
178
179
180
181
182
183
184
185
186
187
188
189
190
191
192
193
194
195
196
197
198
199
200

30

31

32

33

34

35

36

37

38

39

40

41

42

43

44

45

46

47

48

49

50

51

52

53

54

55

56

57

58

59

60

61

62

63

64

65

66

67

68

69

70

71

72

73

74

75

76

77

78

79

80

81

82

83

84

85

86

87

88

89

90

91

92

93

94

95

96

97

98

99

100

101

102

103

104

105

106

107

108

109

110

111

112

113

114

115

116

117

118

119

120

121

122

123

124

125

126

127

128

129

130

131

132

133

134

135

136

137

138

139

140

141

142

143

144

145

146

147

148

149

150

151

152

153

154

155

156

157

158

159

160

161

162

163

164

165

166

167

168

169

170

171

172

173

174

175

176

177

178

179

180

181

182

183

184

185

186

187

188

189

190

191

192

193

194

195

196

197

198

199

200

OCT. 1909
WAUPACA
WIS.



Scale of Feet.
0 50 100 150

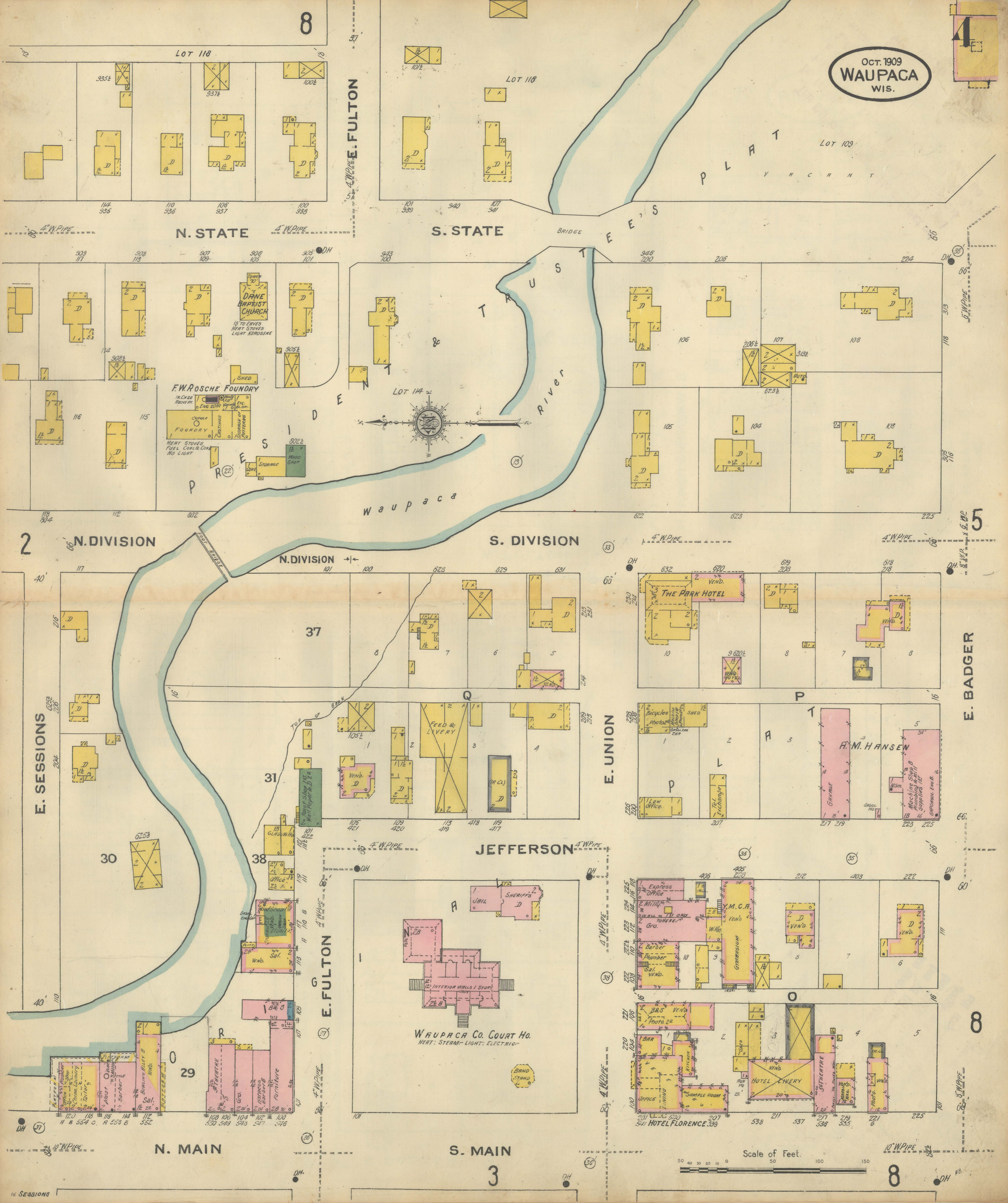
3

2

1.37
2.36

S. MAIN 4

82



8

4

5

E. BADGER

60

8

8

S. STATE

N. STATE

S. DIVISION

N. DIVISION

E. SESSIONS

E. UNION

E. FULTON

S. MAIN

N. MAIN

3

WAUPACA CO. COURT HO.
HEAT: STEAM- LIGHT: ELECTRIC-

JEFFERSON

THE PARK HOTEL

A. M. HANSEN

DANE BAPTIST CHURCH

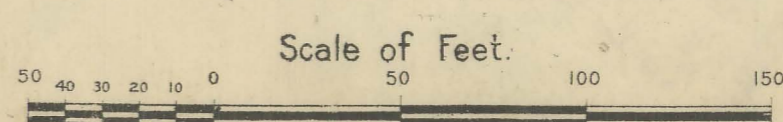
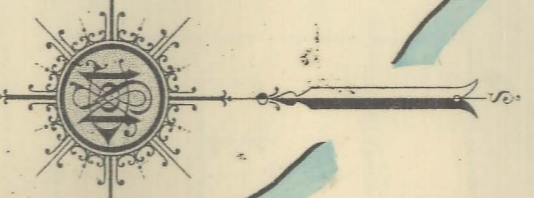
F.W. ROSCHE FOUNDRY

FEED & LIVERY

HOTEL FLORENCE

HOTEL LIVERY

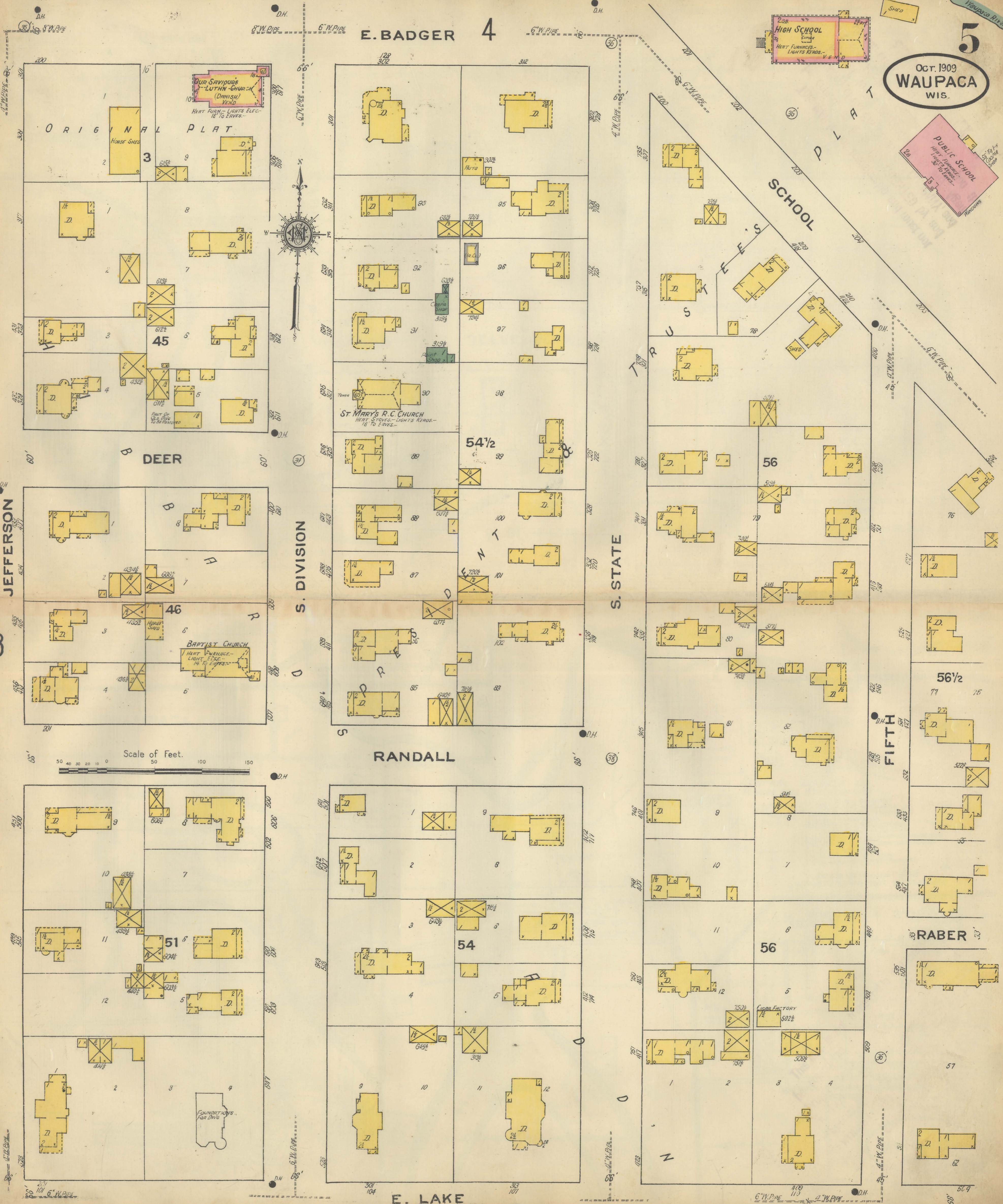
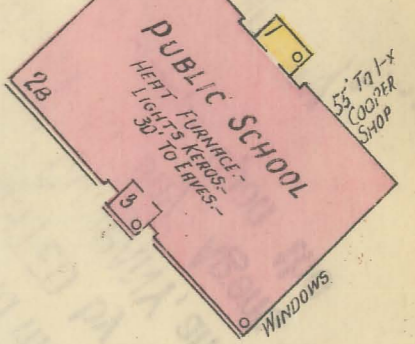
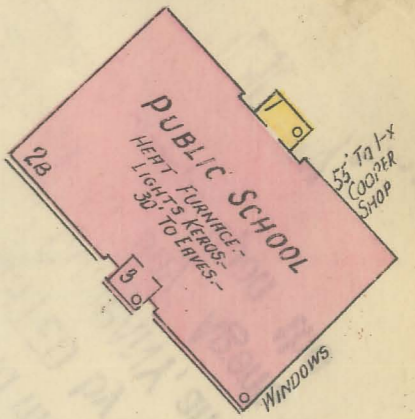
M.C.A.



E. BADGER 4

5

Oct. 1909
WAUPACA
WIS.



JEFFERSON

8

9

10

11

ORIGINAL PLAT

DEER

46

BAPTIST CHURCH
HEAT FURNACE - LIGHTS KEROSENE

51

FOUNDATIONS FOR DRUG

S. DIVISION

RANDALL

E. LAKE

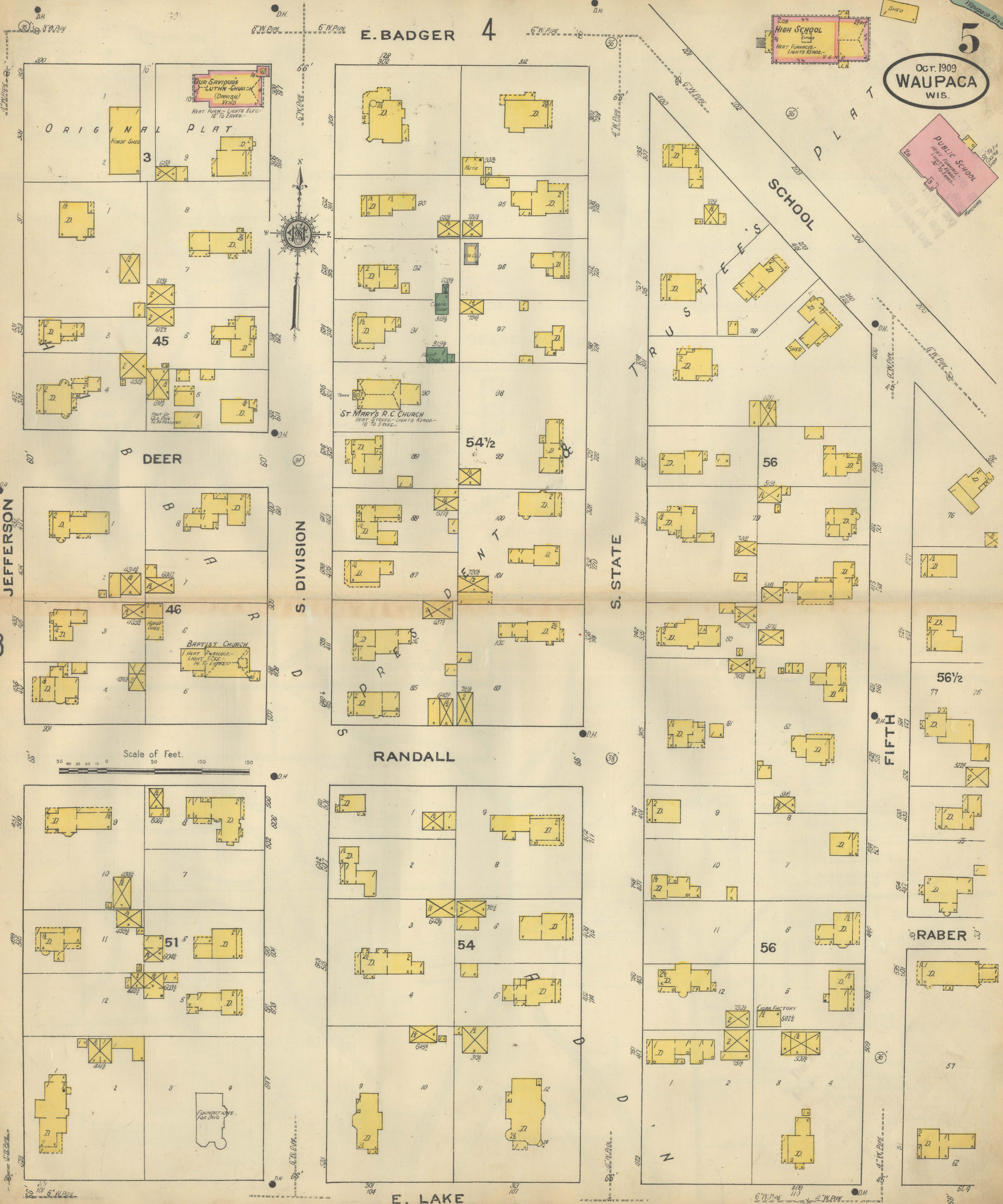
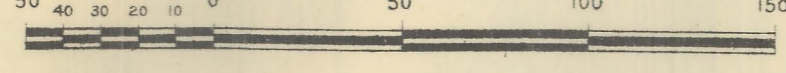
S. STATE

SCHOOL

FIFTH

RABER

Scale of Feet.



WAUPACA STARCH & POTATO CO.
CLOSED

RUN IRREGULARLY-WATCHMAN WHEN RUNNING-
FUEL: COAL & WOOD- LIGHTS: KEROSENE LAMPERS
CITY WATER & STEAM- DUPLEX PUMP 8" & 12"
DRAWING FROM RIVER-SMALL AMT OF H. HOSE.

NO EXPOSURE

WAGON 9' SHED

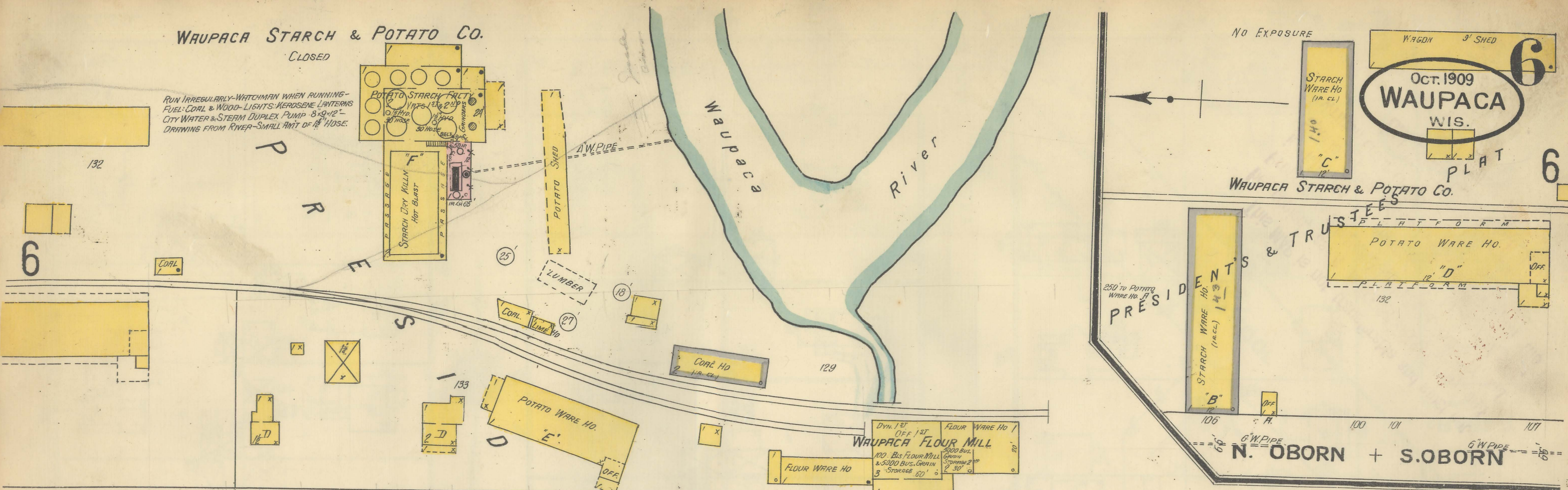
6

OCT. 1909

WAUPACA

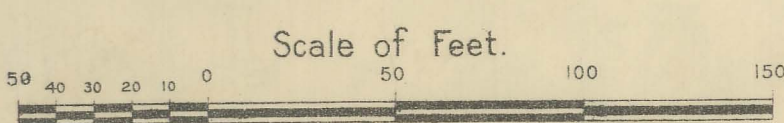
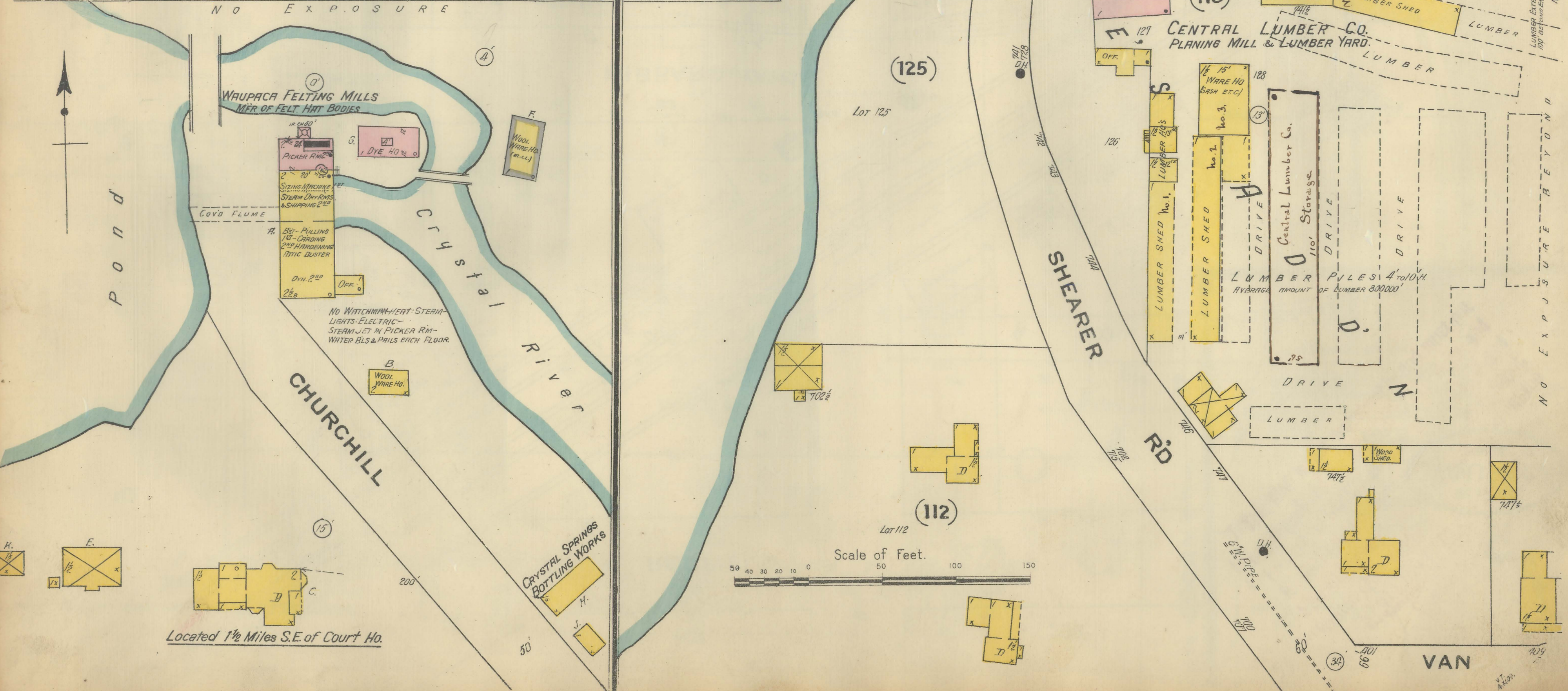
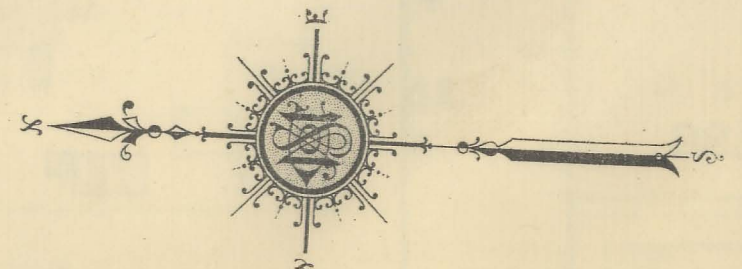
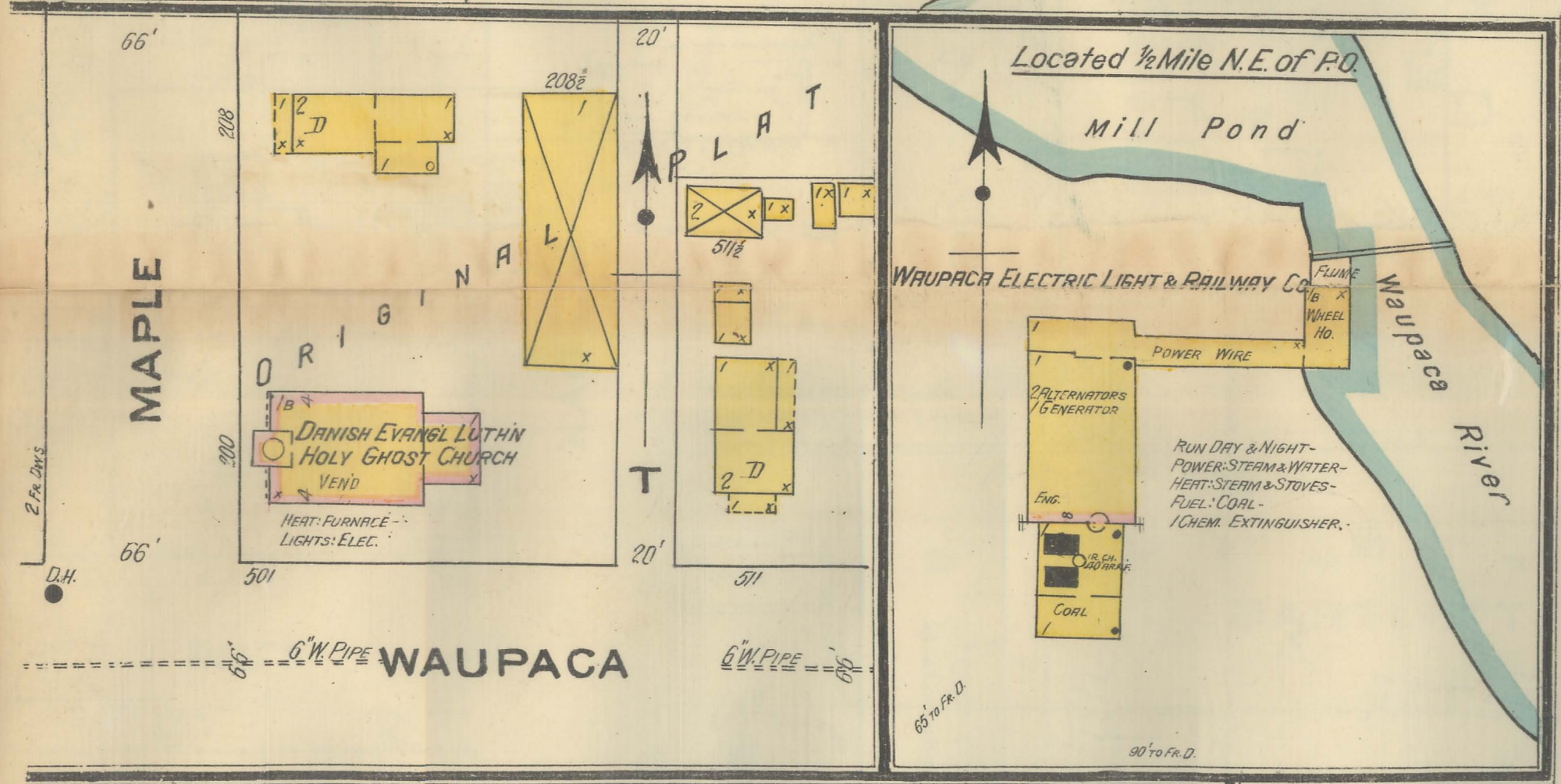
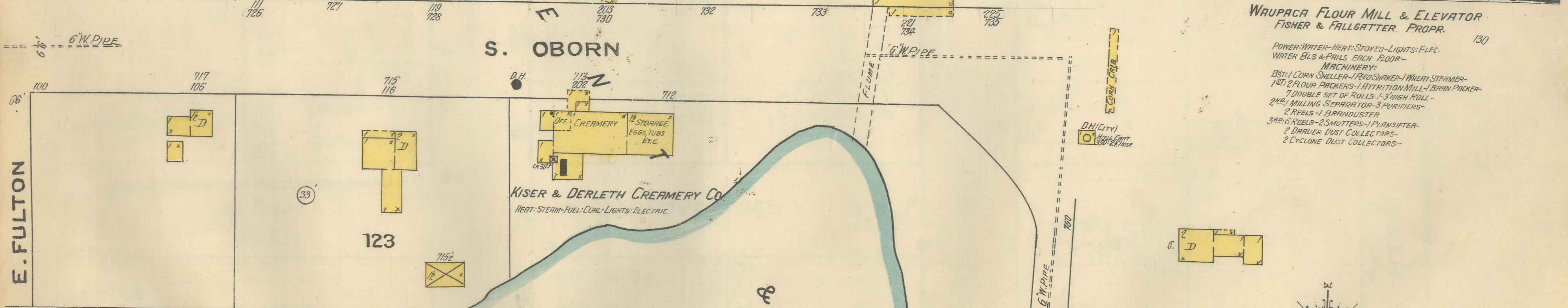
WIS.

PLAT 6



WAUPACA FLOUR MILL & ELEVATOR
FISHER & FALLGATTER PROP.

- POWER: WATER-HEAT: STOVES: LIGHTS: ELEC.
- WATER BLS & PAILS: CRAN: FLOUR-
- MACHINERY:
- 1ST: 1 CORN SHELLER-1 FEED WAKER-1 WHEAT STEAMER-
- 2ND: 2 FLOUR PACKERS-1 ATTRITION MILL-1 BRAN PACKER-
- 3RD: 1 DOUBLE SET OF ROLLS-1 HIGH ROLL-
- 4TH: 1 MILLING SEPARATOR-3 PURIFIERS-
- 5TH: 2 REELS-1 BRAN DUSTER-
- 6TH: 1 REEL-2 SMUTTERS-1 PLANSIFTER-
- 7TH: 1 DRAWER DUST COLLECTOR-
- 8TH: 2 CYCLONE DUST COLLECTOR-



Located 1/2 Miles S.E. of Court Ho.

OCT. 1909
WAUPACA
WIS.



GRANITE QUARRY

WISCONSIN GRANITE CO.
NO WRT CHAIN. NO LIGHTS.
FUEL: COAL & WOOD. F.P. 100' 3/4" HOSE
NO EXPOSURE ANY SIDE



10

201

202

REDFIELD

204

203

HIBBARD

MILL

OAK

205

BALCH

206

BARTLETT

WAUPACA

208

207

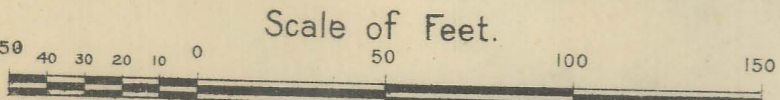
WARE

PRESIDENTS & TRUSTEES

N. OBORN

210

OFF. WAUPACA STARCH & POTATO CO.
POTATO WARE HO.
Peterson Produce Co.



250 TO WAUPACA S.E. P.O.S.
IRON CAP STARCH W.H. HO.
SEE SHEET NO. 6

E.W.
12-30-109

OCT. 1909
WAUPACA
WIS.

W. PLEASANT

W. BADGER

E. BADGER

N. WASHINGTON

N. MAIN

S. WASHINGTON

S. MAIN

JEFFERSON

GRANITE 3

PRESIDENT & TRUSTEES PLAT.

DEER

RANDALL

Lot 118

MAPLE

E. FULTON

4

TRUSTEES' ADD'N

UNION STARCH CO.
OPERATES IRREGULARLY
NIGHT WATCHMAN WHEN RUNNING.
HEAT - STEAM & HOT BLAST -
LIGHTS KEROSENE LANTERNS -
CITY WATER & SMALL RAIN 2 1/2" HOSE.
F.P. 8" x 12" DRAWING FROM RIVER.
ALSO CONNECTED WITH HYDRANTS.
CONCRETE FLOOR IN COILER ROOM.

A. M. HANSEN
SAW & PLANING MILL & LUMBER YARD
LUMBER PILES 8' TO 12'
LUMBER SHED

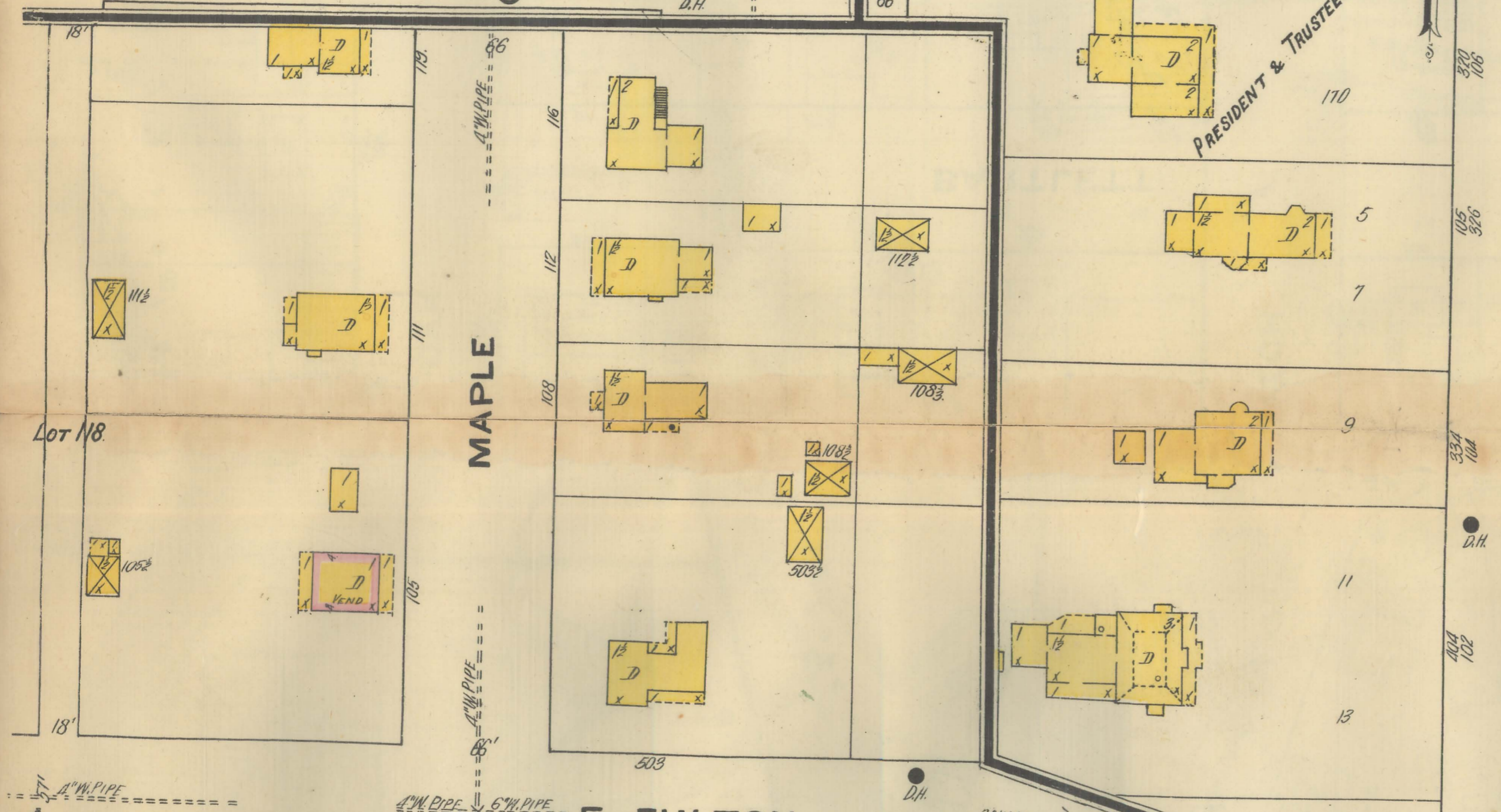
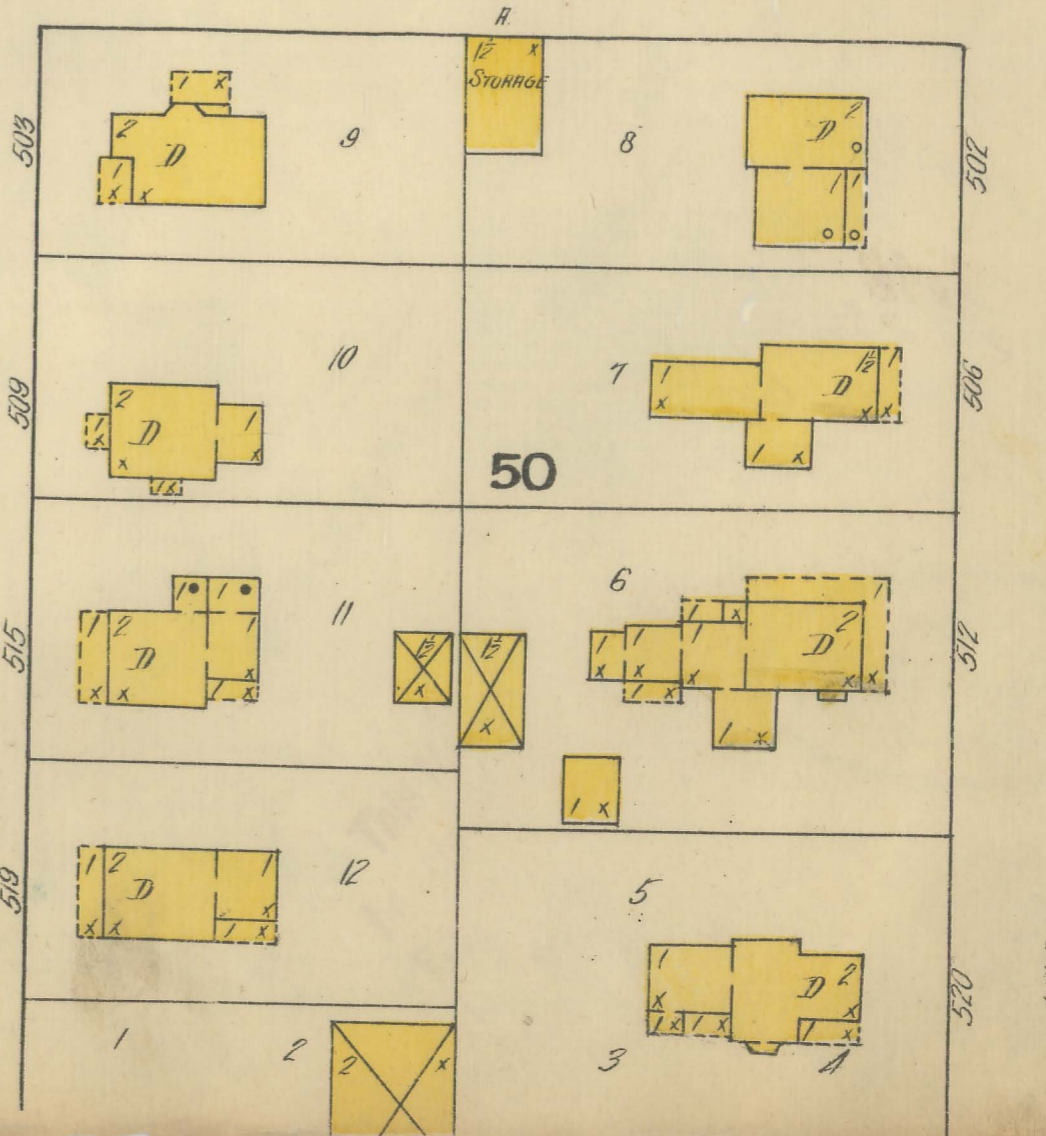
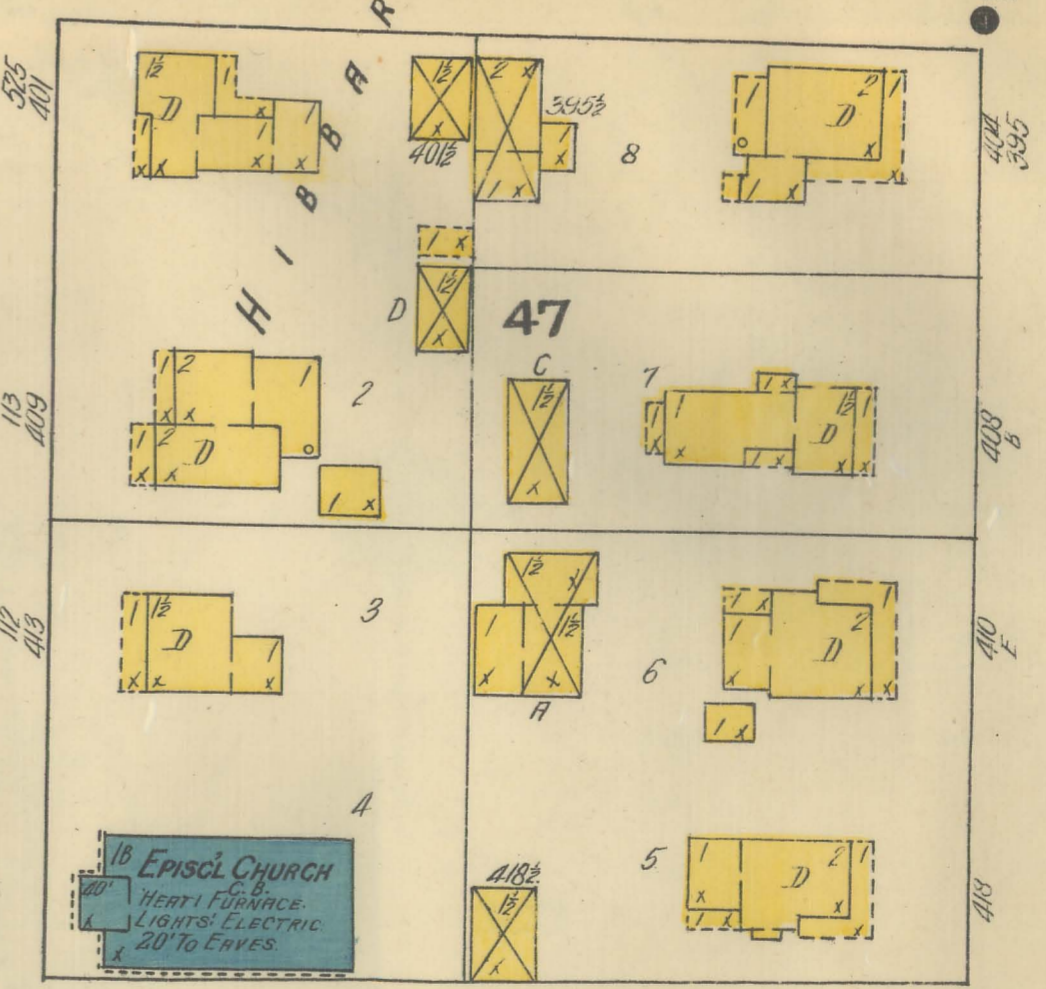
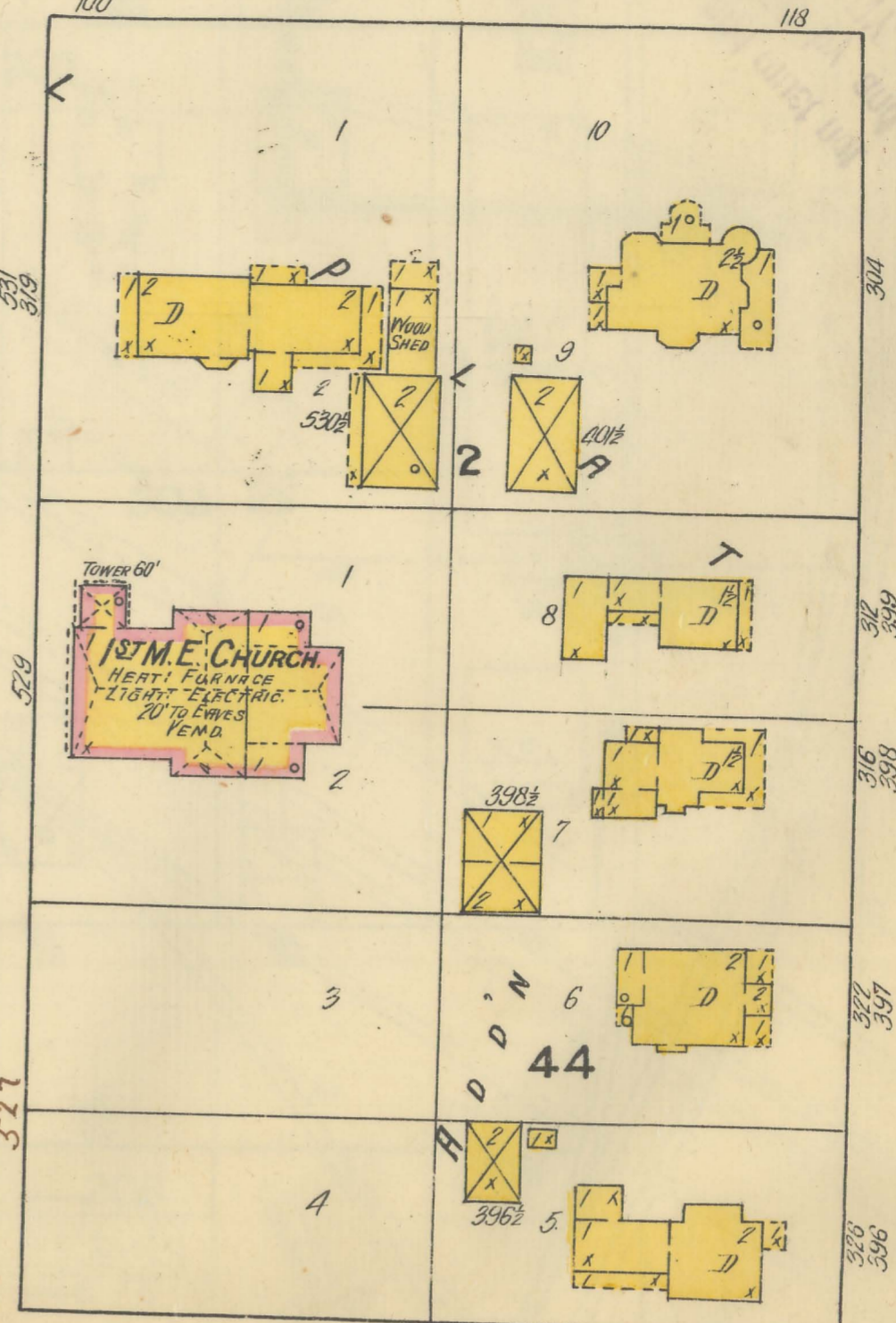
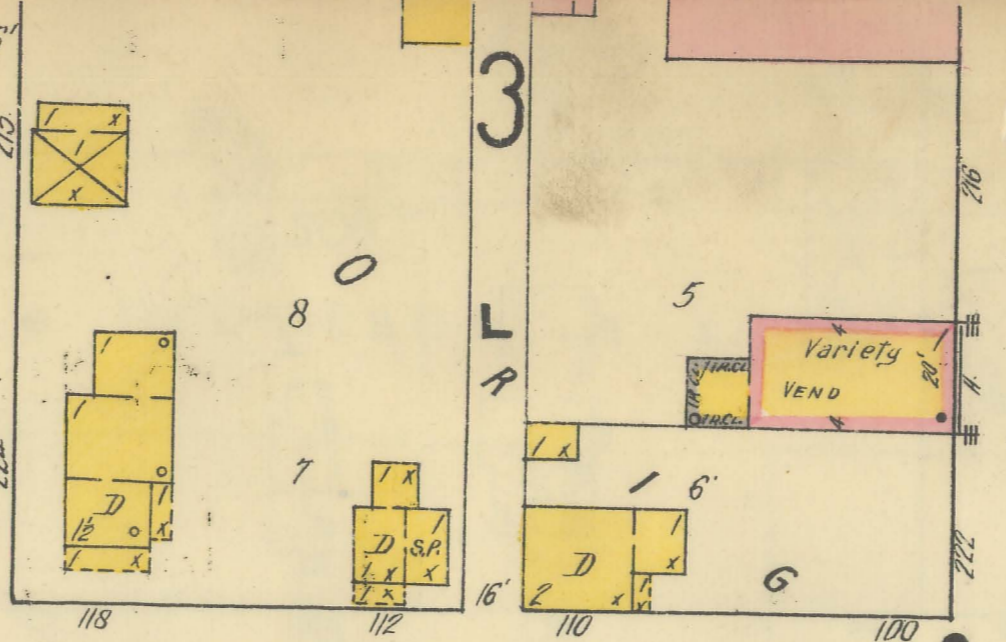
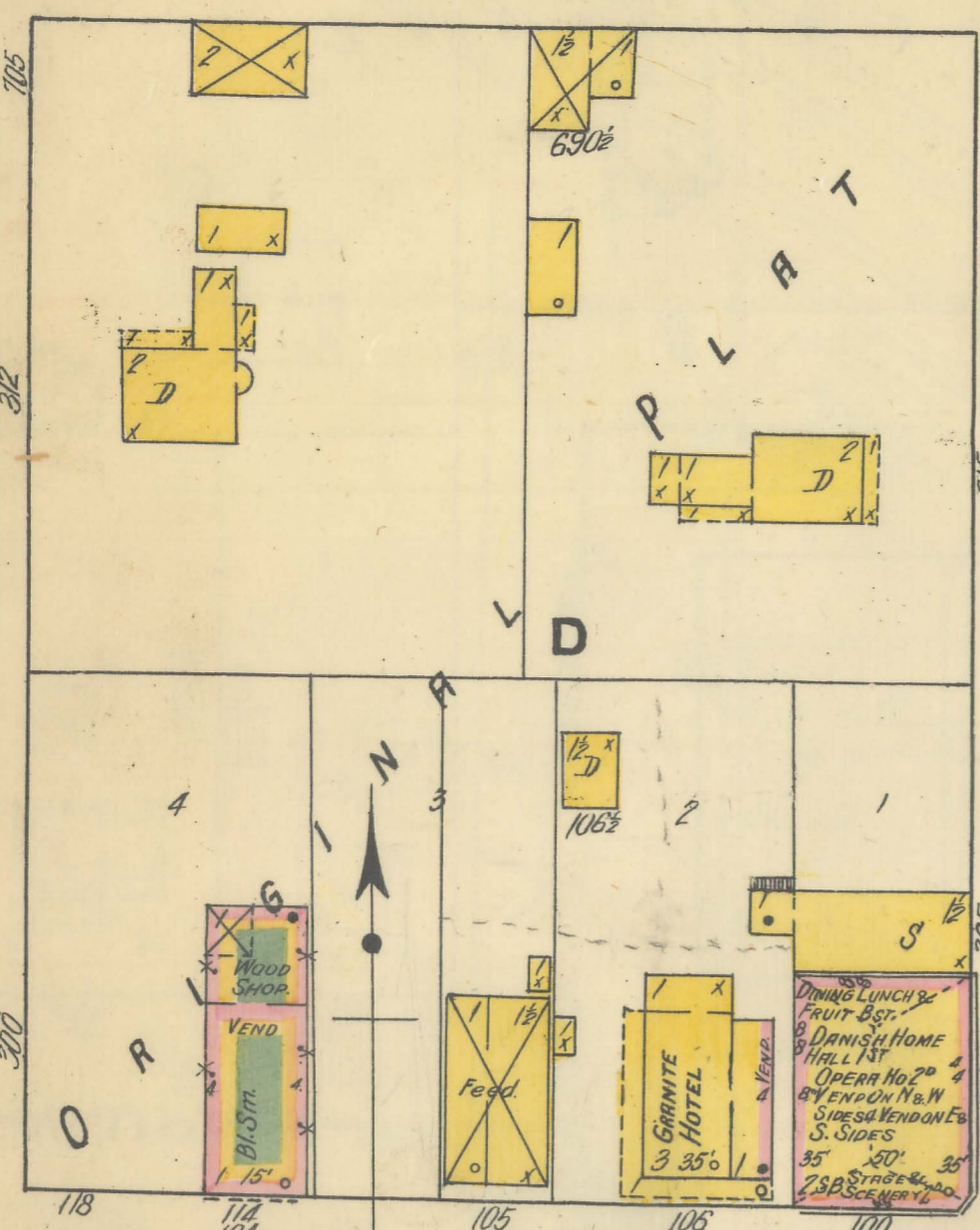
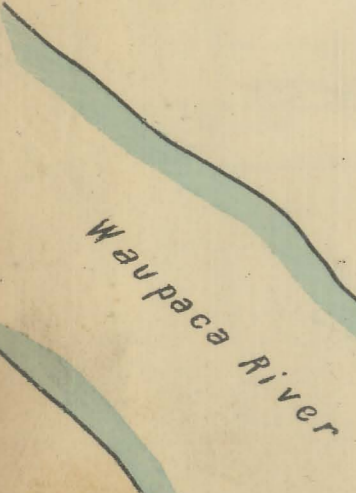
STARCH DRY HD & SACKING

POTATO BINS

SAW MILL RUNS IN WINTER ONLY
POWER SYSTEM - FUEL SAWINGS -
HOT WATER FROM RIVER BLOWERS
TO PLANERS. KNOWLEDGE P.F. 8" x 12" HOSE.

SAW MILL
PLANING MILL

Scale of Feet.



WISCONSIN STATE VETERAN'S HOME

FOR OLD AND DISABLED SOLDIERS

Located 3 1/2 Miles S.W. of Waupaca

OCT. 1909
WAUPACA
WIS.

POWER PLANT OPERATED ALL NIGHT
NIGHT WATCHMAN-12 STATIONS
EQD. MARCHING CLOCK
FUEL COAL - LIGHTS - ELECTRIC
HEAT - STEAM IN ALL PRINCIPAL BUILDINGS,
STOVES IN COTTAGES -
VOLUNTEER FIRE DEPT. 20 MEN -
16 2 1/2" HYDRANTS, CONNECTED WITH 1800
GAL. WATER TANK 100' ABOVE LAKE LEVEL
ALSO WITH 2 STEAM PUMPS FAIRBANKS
MORSE 8" 15" 10" & PRESCOTT 14" 12" 12"
AT RAINBOW LAKE -
WATER FROM LAKE -
2 HOSE CARTS & 600' 2 1/2" HOSE



Scale of Feet.
0 50 100 150